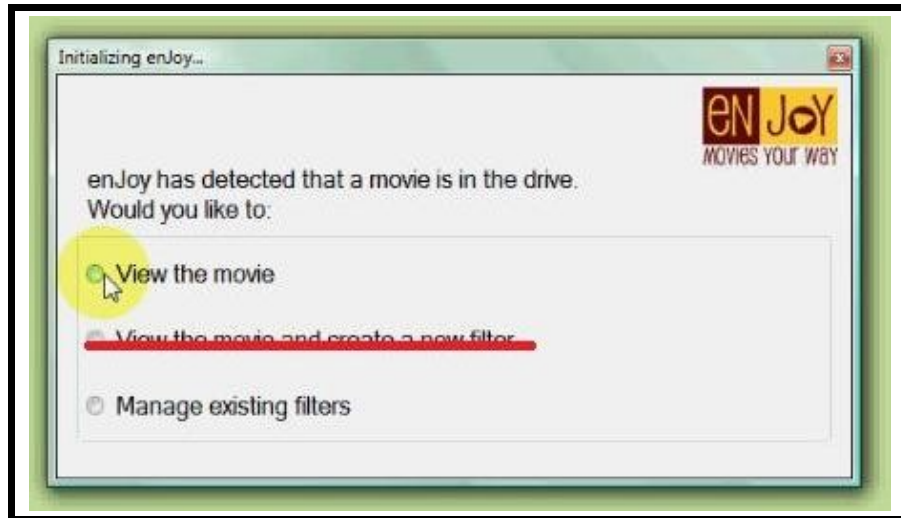
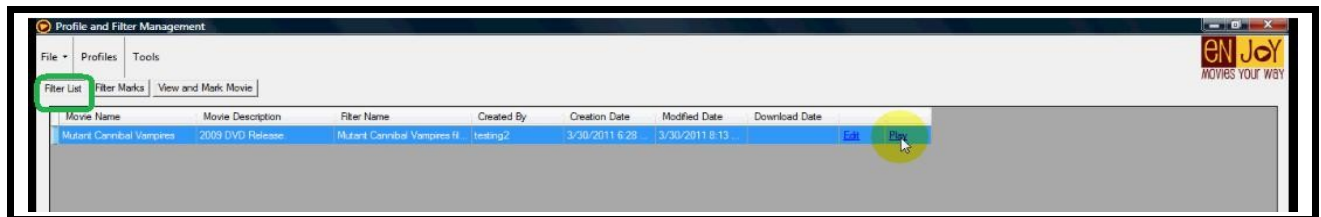


Hi, this is Traci with enJoy Movies Your Way. This tutorial will explain the difference between the enJoy Player and the Profile and Filter Manager.

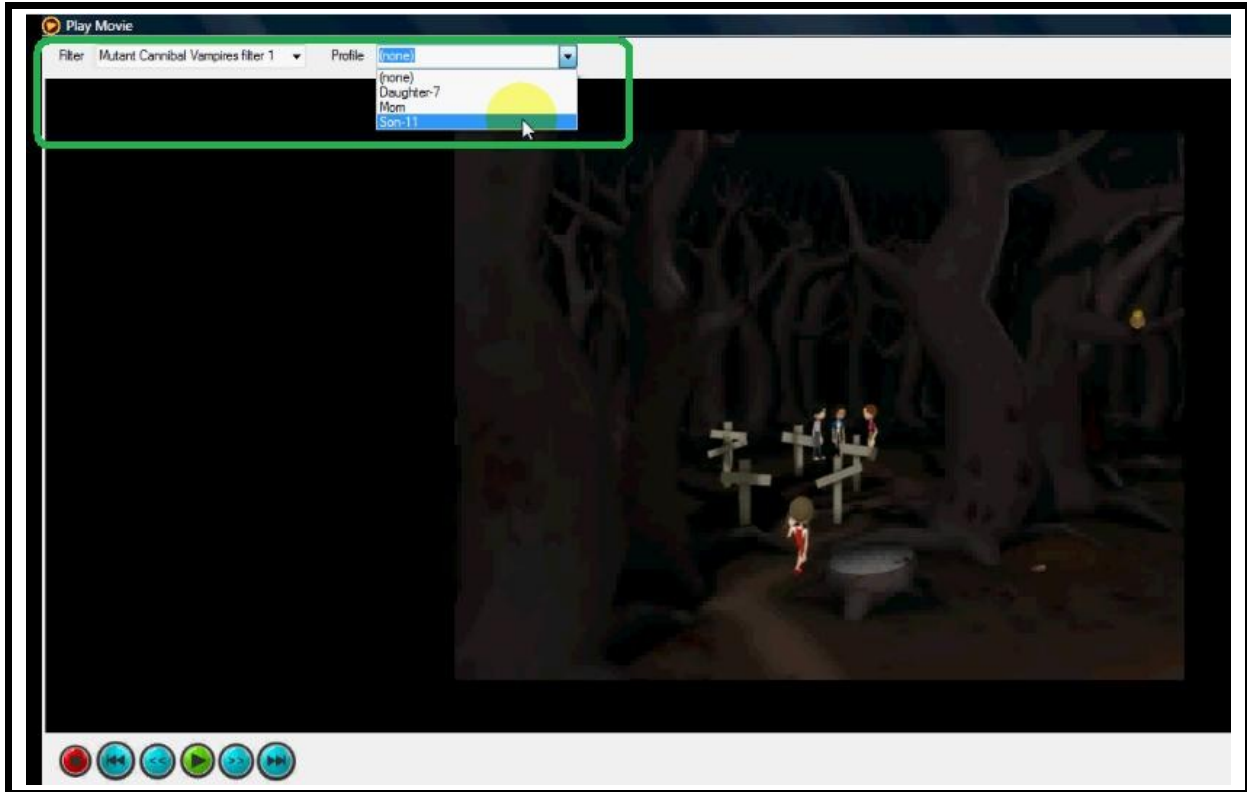
The enJoy Player is just for watching movies. You can't create any filters in the enJoy Player. You get to the enJoy Player in two ways. One way is to choose the first option when starting enJoy. I won't do that now.



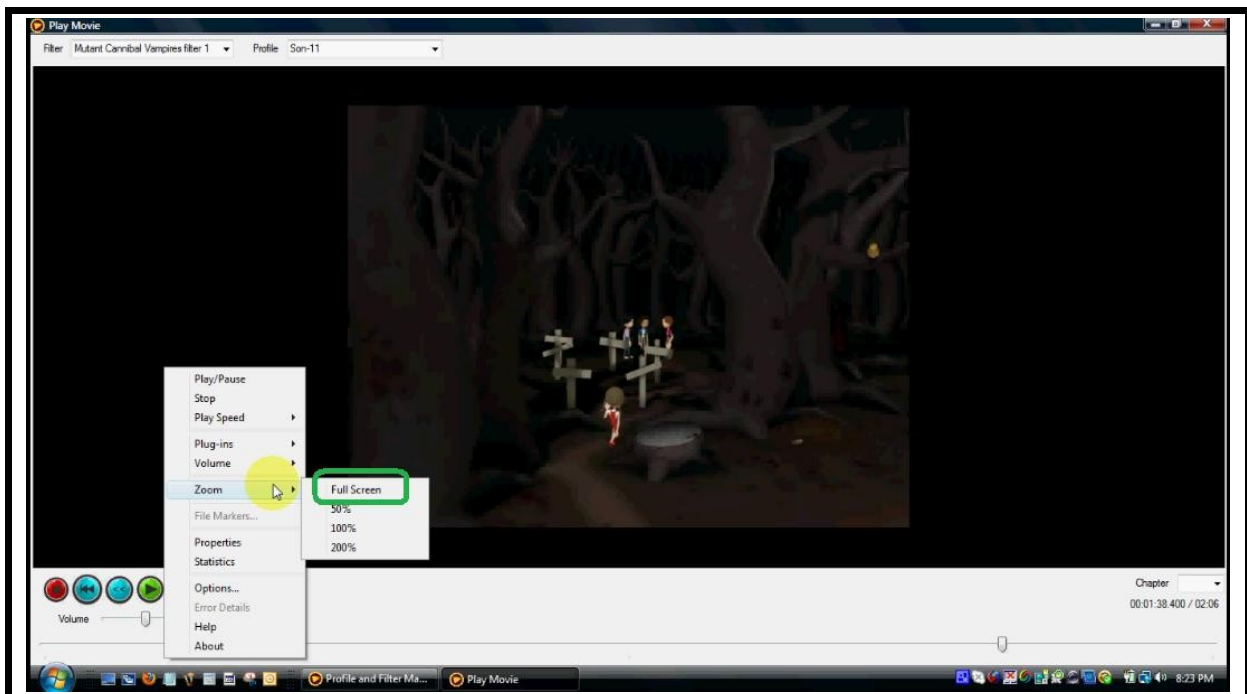
The second way to get to the enJoy Player is to click on Play from the Filter List screen.



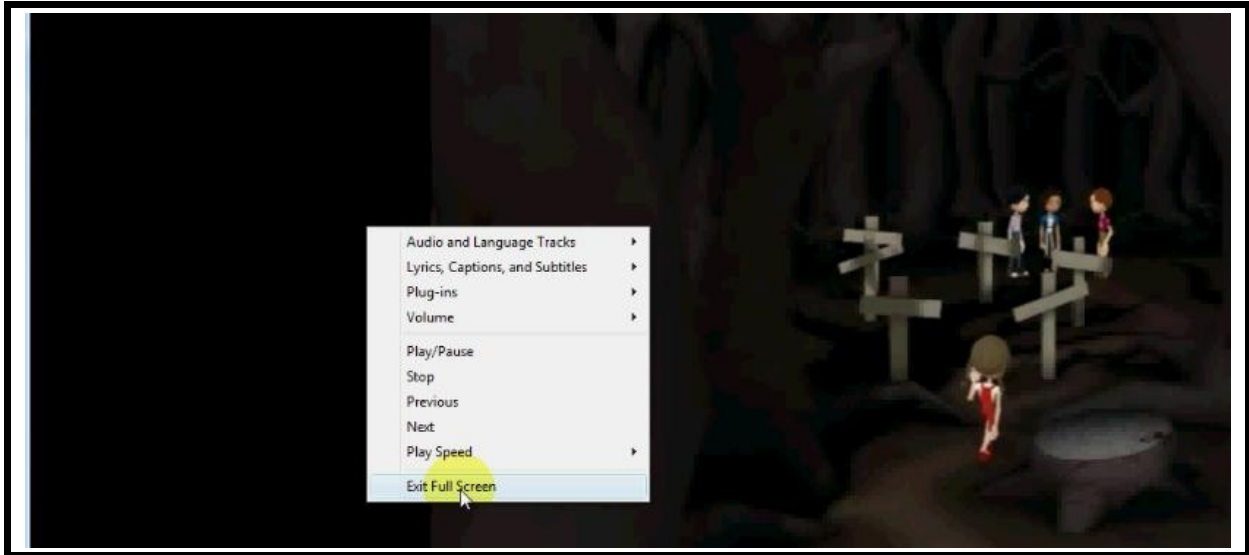
The enJoy Player is a simplified interface for watching movies. At the top, you select the filter and profile that you want to use, then select any menu options such as subtitles off, which I highly recommend, and then click Play.



You can watch the movie in full screen by right-clicking to get the popup menu, then left-clicking on Zoom and Full Screen.

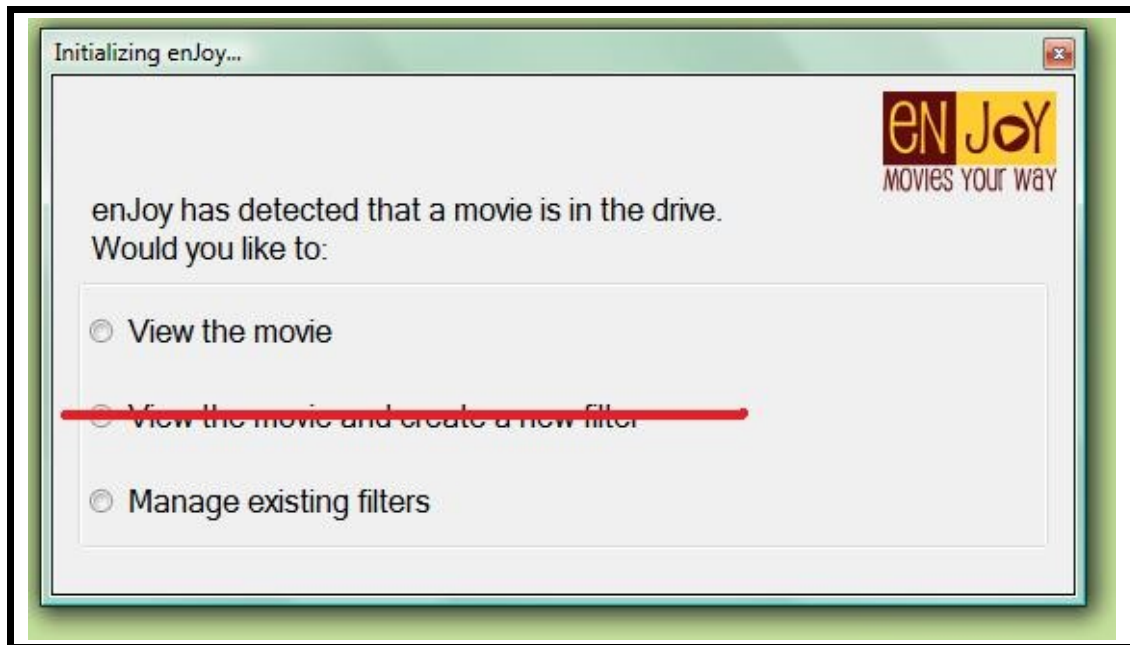


To cancel full-screen, right-click to go the popup menu, then left-click on Exit Full Screen.



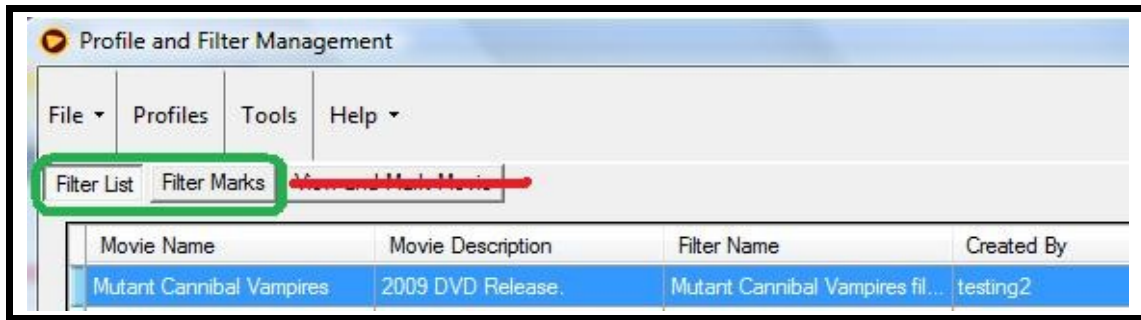
When the movie is finished, just close the enJoy Player.

To get to the Profile and Filter Manager, choose [~~either the second or~~] the [~~third~~] last option when starting enJoy.

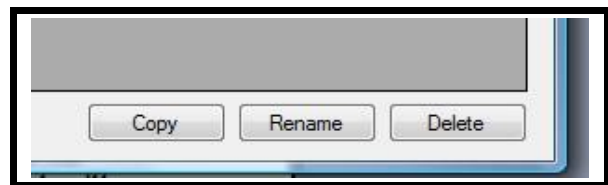


The Profile and Filter Manager allows you to create a profile for each member of your family. It also allows you to set some preferences regarding how the program operates.

There are [~~three~~] two screens for managing your filters. First, the filter list shows a list of all of the filters you have created, or in the future, it will also show filters you have downloaded from the Internet.



You can Copy, Rename, or Delete filters. You can edit filter marks, or click Play to watch a movie with that filter applied.



The second screen is the filter marks screen, where the individual filter marks are created (see Video #6).

[This option will be disabled because it is redundant.]

The third screen is view and mark movie. When would you use this screen? Let's say that you and your spouse want to enjoy a movie together and you think that maybe you might let your 12 year-old son watch it too, but you're guessing that there are probably going to be some scenes that you'll want to filter out for him. The main purpose of this screen is to watch the movie for yourself, but it also enables you to create filter marks AS you are watching the movie, which will save you time later trying to find the exact places that you wanted to filter.

That's it! This tutorial briefly explained the differences between the enJoy Player and the Profile and Filter Manager.