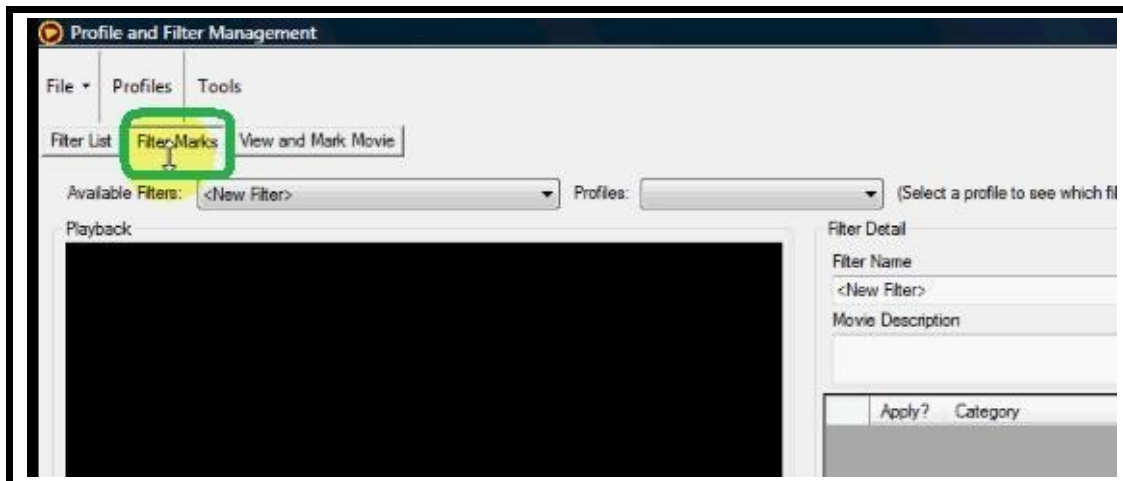


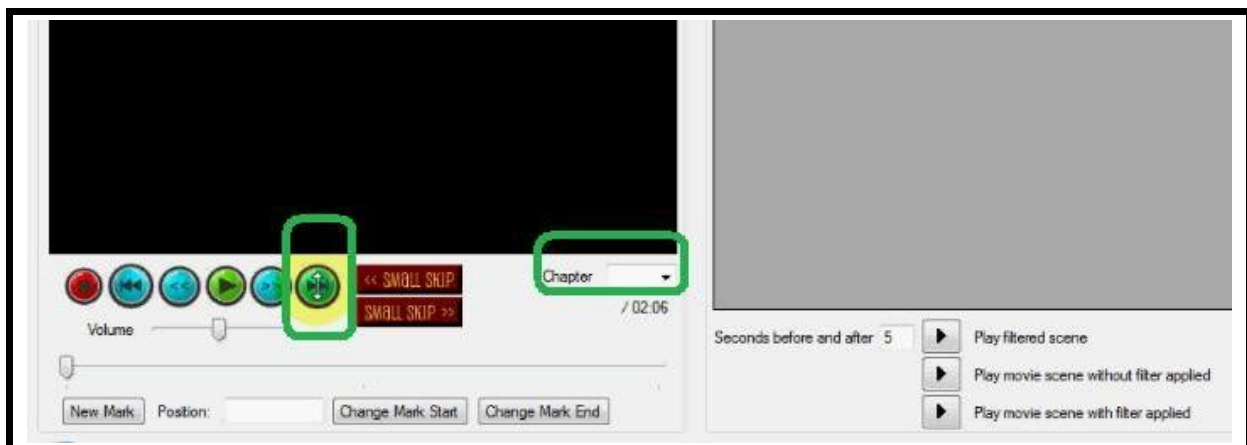
Video 6a: Filter Marks Screen 1

Hi, this is Traci with enJoy Movies Your Way. This tutorial will discuss how to manage filter marks.

You should have already created profiles for each member of your family before using this screen.



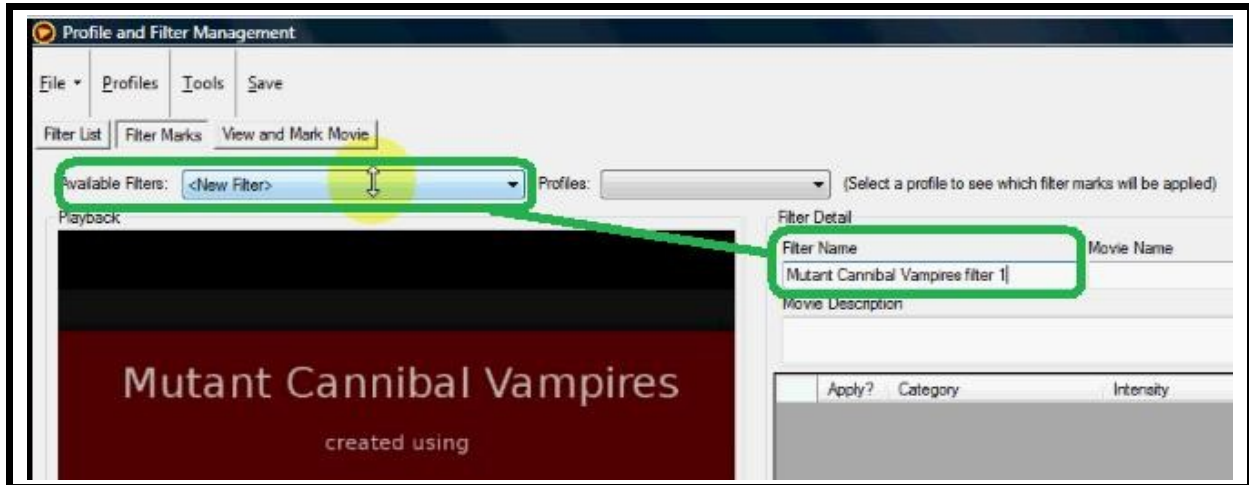
If you have a DVD in the drive already, when you first arrive on this screen, it will begin to play the DVD. You can advance past the previews using the next scene button or the chapter drop-down.



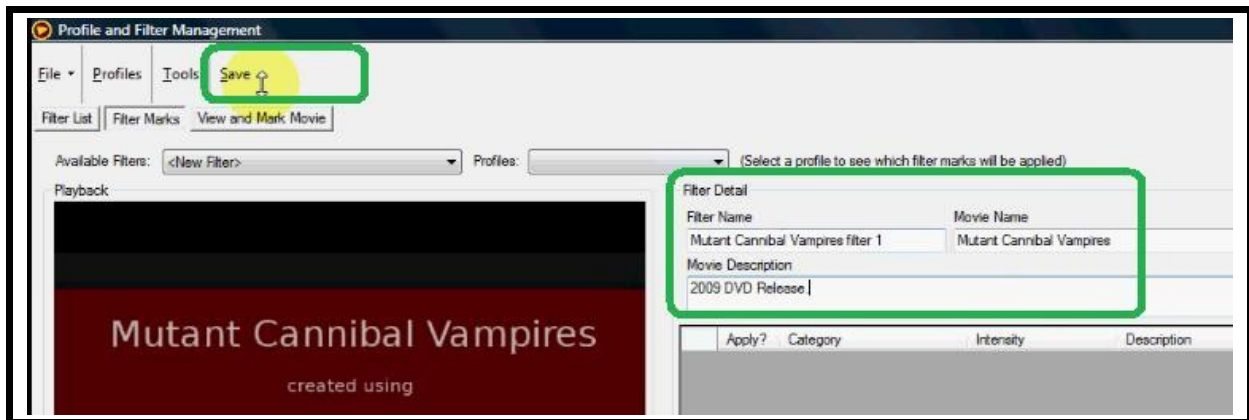
When you get to the main menu, I highly recommend turning off the subtitles before clicking Play. [Actually, when creating filter marks, you might want to keep the subtitles on so you can notice the words more easily].

This is a two-minute section of a movie that we created called Mutant Cannibal Vampires. ~~I'm going to click Pause to avoid the distraction of the movie right now.~~ I'm going to enter a filter name. I would recommend the first part of the name starting with the actual movie name, since

the filter name is what will appear in the drop-down box and you will want to be able to find the filters alphabetically by movie name.



Then enter the movie name and a description. This is not a description of the movie plot, as in "a delightful story about a girl and her dog." No. This is where you identify the version of the movie you are making the filter for, such as the extended version, director's cut, etc. When you are done, click Save to save the filter.



Select the filter from the Available Filters drop-down box. Let's review the movie control buttons. The first and last blue buttons are the previous scene and next scene buttons. The little vertical line refers to a scene. The buttons just inside are the rewind and fast forward buttons. Clicking these buttons increases the movie speed in either direction. The green button is Play, and once you click it, you will see a Yellow Pause button. Pause will stop the movie and keep its place, but the Red Stop button will stop the movie and restart at the beginning of the movie. I don't usually click Stop because I don't want to lose my place.



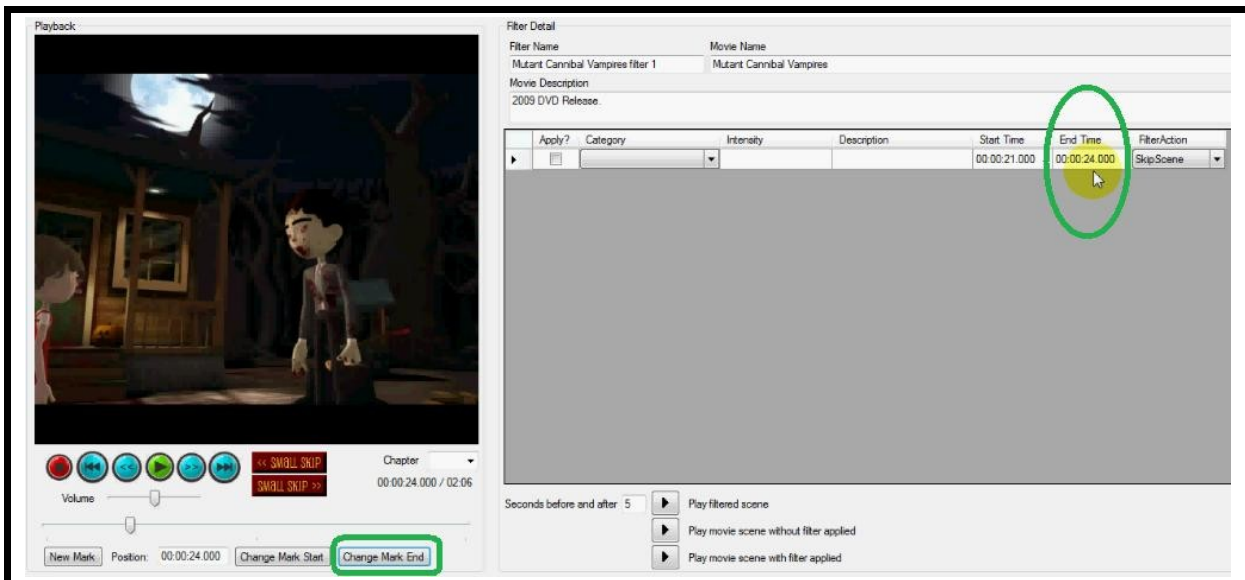
The small skip buttons will go backward or forward a half second at a time. These buttons are used when trying to get to an exact place in the movie. You can use the chapter drop-down or the slider control to advance more quickly to a certain section of the movie.

Video 6b: Filter Marks Screen 2

When you get to a place where you want to create a filter mark, click New Mark. You'll notice that a row is created in the grid.

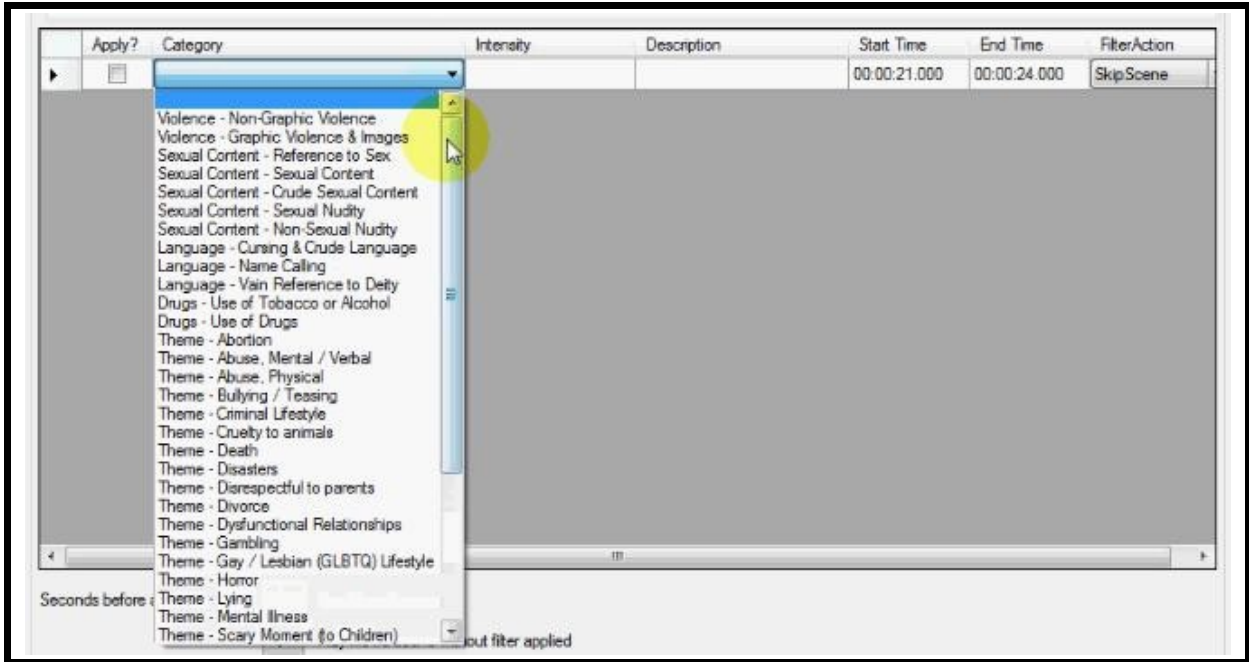


When you get to a place where you want to mark the end of a scene, click Change Mark End. You'll notice that an end time has been added to the grid.

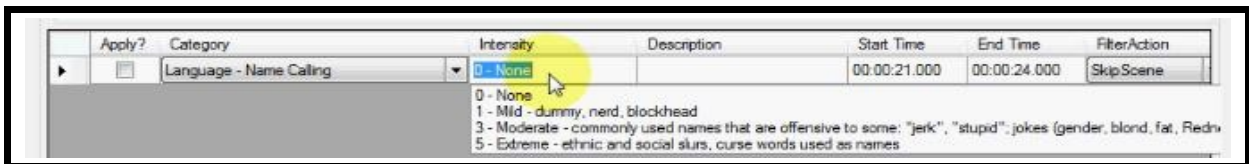


Now we need to label the filter mark with the appropriate category and intensity. There is one quirk on the filter marks screen, which I'll mention briefly. The drop-down boxes in the grid require two clicks before they will expand. This will be fixed in a future version. There are 12

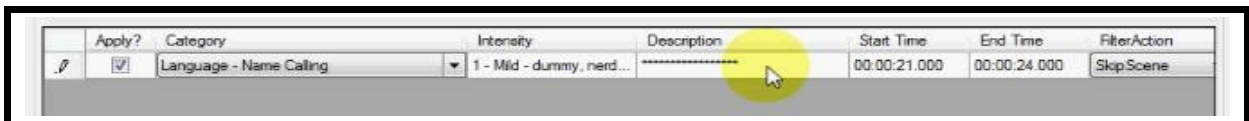
predefined categories, several themes, and 5 custom categories for you to choose from. First select the category because that will affect which intensities show up in the intensity drop-down list.



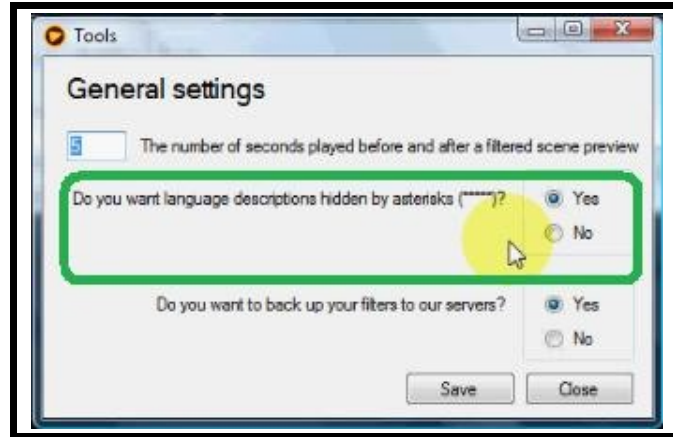
The scene intensity ranges from 1-5 and a few words are shown to give you an idea of what each intensity represents. You don't have to follow our recommendations, but if you intend to share filters with others, it is important to learn and understand these scene intensity ratings that will be common to all filters.



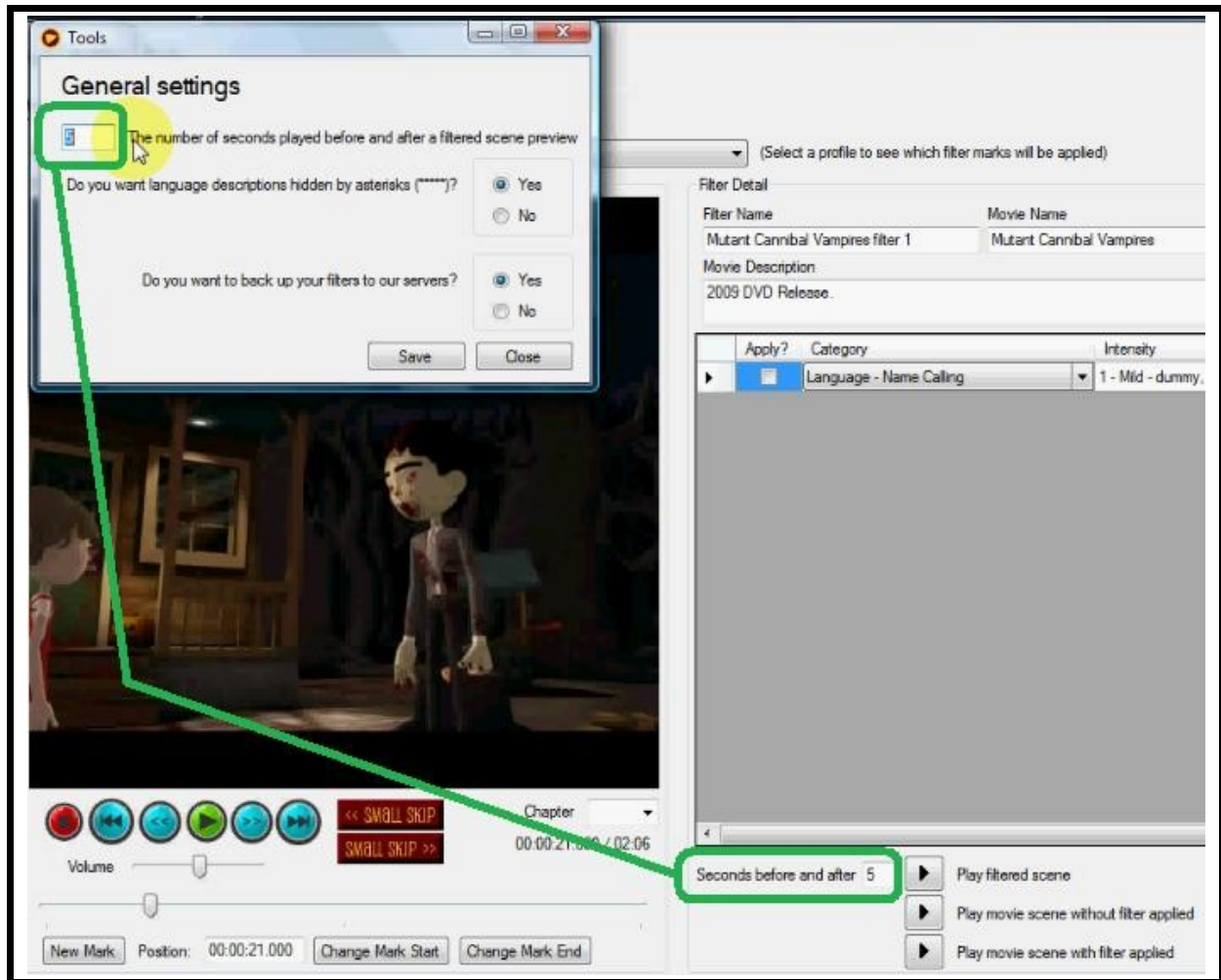
You can type a description of what is being marked, and then select skip scene or mute sound. For language, you should type in the exact word or phrase that is said, but don't worry, you won't have to look at it. The phrase will be hidden by asterisks.



Only if you click in the description field will you see the actual phrase. You can change this setting under the Tools menu.



You can also set the number of seconds played before and after a filtered scene preview, which is the same as this number down here, which I will explain in a moment.



Let's make a few more filter marks [the rest of the video plays through to the end of the two-minute movie].

Video 6c: Filter Marks Screen 3

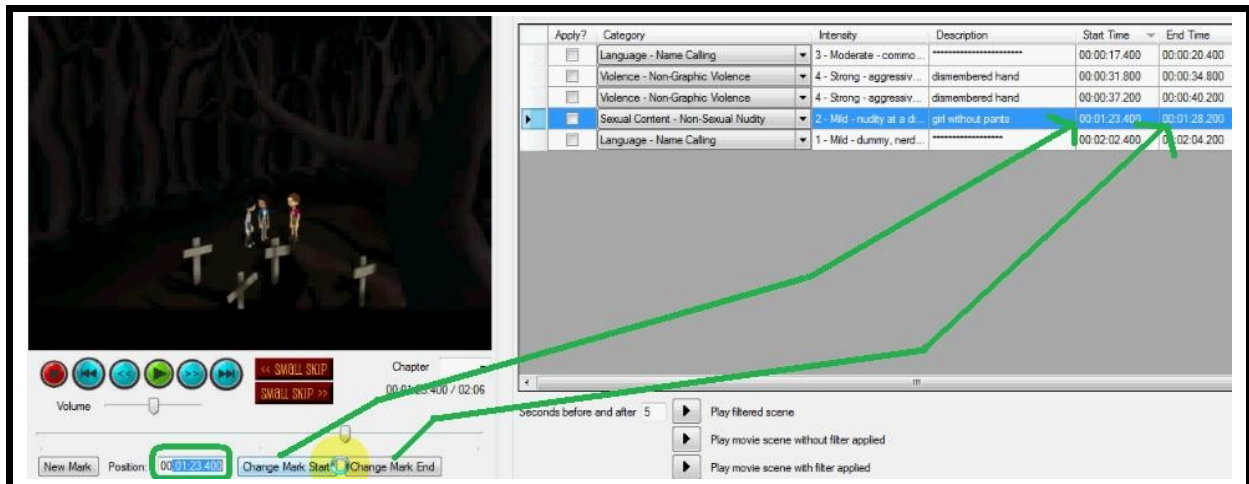
Now that we have a few more filter marks, let me explain how to edit filter marks and move between filter marks. You can click on the different column headings to sort. This is useful if you want to see all of the filter marks together by category, or to check out the intensity levels and how many of each number are there. Generally, I sort by Start Time.

Apply?	Category	Intensity	Description	Start Time	End Time	Action
<input type="checkbox"/>	Language - Name Calling	3 - Moderate - commo...	*****	00:00:17.400	00:00:20.400	MuteSound
<input type="checkbox"/>	Violence - Non-Graphic Violence	4 - Strong - aggressiv...	dismembered hand	00:00:31.800	00:00:34.800	SkipScene
<input type="checkbox"/>	Violence - Non-Graphic Violence	4 - Strong - aggressiv...	dismembered hand	00:00:37.200	00:00:40.200	SkipScene
<input type="checkbox"/>	Sexual Content - Non-Sexual Nudity	2 - Mild - nudity at a d...	girl without pants	00:01:23.400	00:01:28.200	SkipScene
<input type="checkbox"/>	Language - Name Calling	1 - Mild - dummy, nerd...	*****	00:02:02.400	00:02:04.200	SkipScene

The black arrow at the beginning of each row tells you which filter mark you are editing. Make sure this triangle is on the row that you think it's supposed to be on, because that's the filter mark that you're editing. As you click each current row, the movie will pause and the Position box will be updated with the start time for that scene. (In this example, this says 37 seconds. You can see that that number changes as I click on the next row. It changes to match the Start Time of the currently selected filter mark.)

Apply?	Category	Intensity	Description	Start Time
<input type="checkbox"/>	Language - Name Calling	3 - Moderate - commo...	*****	00:00:17.400
<input type="checkbox"/>	Violence - Non-Graphic Violence	4 - Strong - aggressiv...	dismembered hand	00:00:31.800
<input checked="" type="checkbox"/>	Violence - Non-Graphic Violence	4 - Strong - aggressiv...	dismembered hand	00:00:37.200
<input type="checkbox"/>	Sexual Content - Non-Sexual Nudity	2 - Mild - nudity at a d...	girl without pants	00:01:23.400
<input type="checkbox"/>	Language - Name Calling	1 - Mild - dummy, nerd...	*****	00:02:02.400

If you click Play, it will start playing at the selected scene. You can type in any time that you want (into the Position text box) and update either the Start Time or the End Time by clicking on Change Mark Start or Change Mark End.

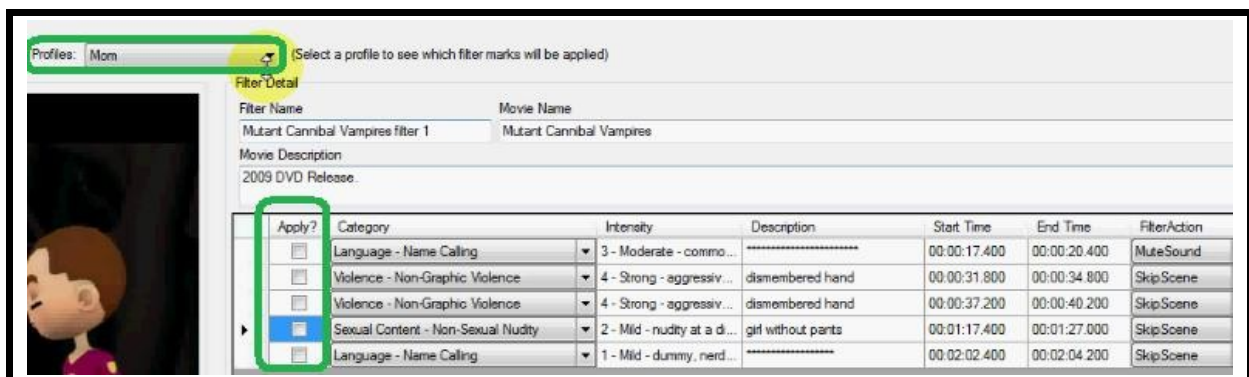


These three play buttons at the bottom of the screen are for making sure that your filter mark Start and End times are right where you want them to be. For example, you can click to play the filtered scene. (That didn't look like it was in the right spot, so I can adjust the filter mark by clicking on the Small Skip buttons until I get it to the place where I want it, and then I can click Change Mark Start and then click Change Mark End. Then to test that I got the exact right Start and End times, I can play the filtered scene. That looks right.)

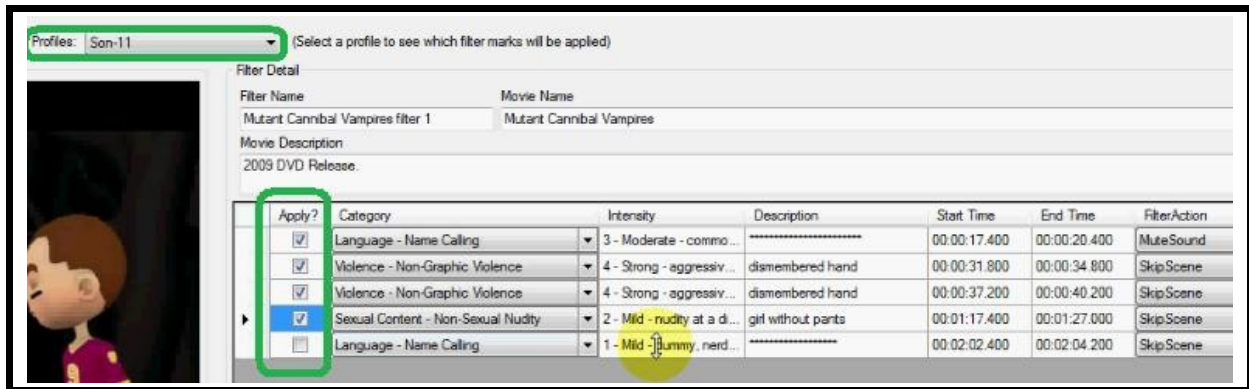


Another option is to play the movie scene with the filter applied. This will show a ten-second section of the movie that will show 5 seconds before the filter mark and 5 seconds after. (So that looks good.)

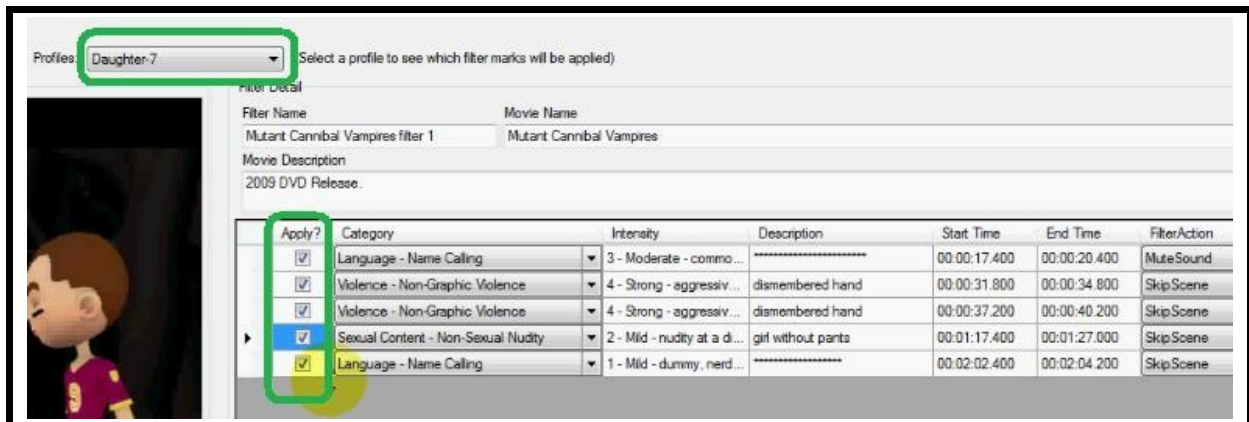
I have not yet selected a profile. Profiles and the Apply checkbox are related to each other. The profile that is selected will show you which filter marks will be applied when the movie is played. For mom, since her settings are mostly 5's, you will see that there are no filter marks that will be applied when she watches this movie.



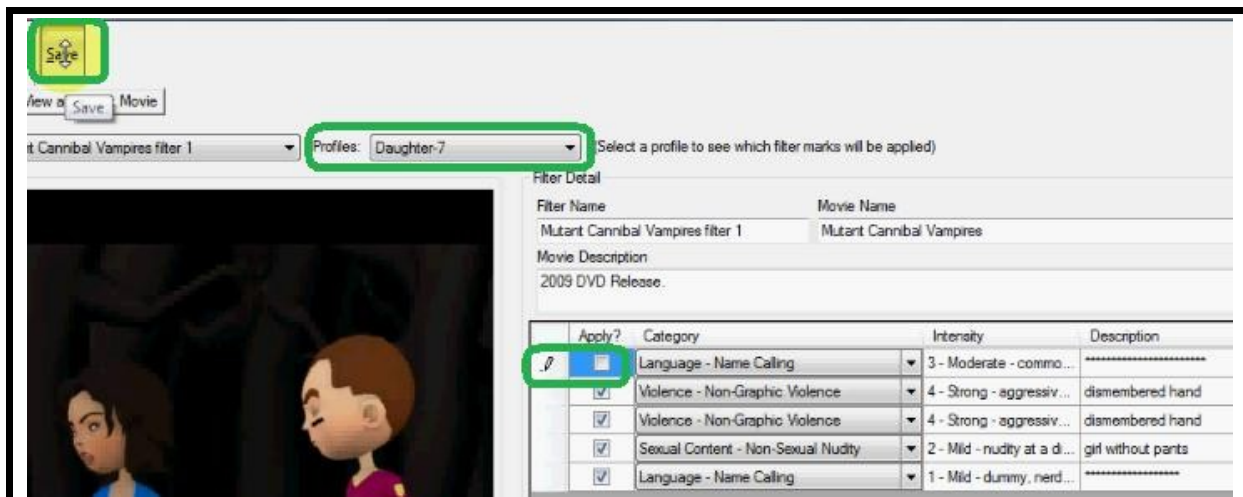
For her son, age 11, you can see that most of these filter marks will be applied except for some language at level 1.



And then for the daughter, age 7, you can see that all of these filter marks will be applied when she watches the movie.



But here's one nice feature. You can override these settings by directly checking the Apply checkbox. (If I uncheck this example, Language – Name Calling, under the daughter's profile, and click Save, and then click the various profiles, you will see that Mom still has all of the Apply checkboxes unchecked, the son still has his the way they were, but the daughter now can see this one filter mark that I unchecked. It will permanently save this check under the Profile in this filter.

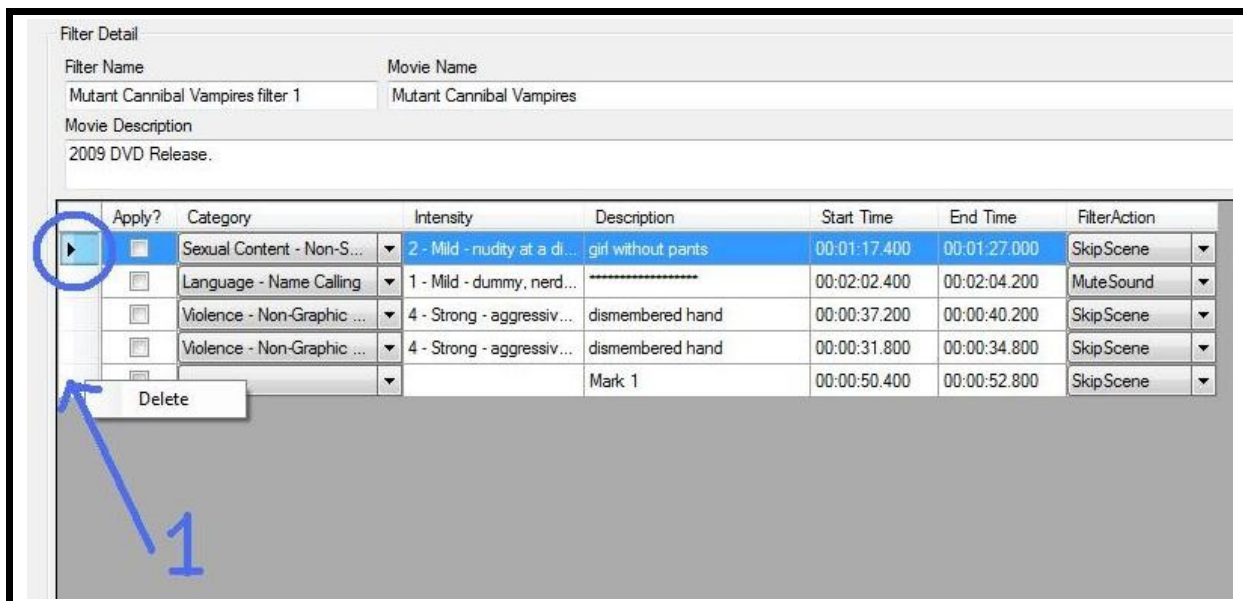


The only time it will be reset is when I edit this particular profile, for example, the daughter's profile, then all the exceptions for all the filters for this one person will be reset. That's why it's important to set up your profiles first and for the most part, don't change them.

That's it. This tutorial has covered how to use the filter marks screen.

Video 6d: Filter Marks Screen 4

One more caution about deleting filter marks on the Filter Marks screen. As you can see here, I have 4 filter marks defined. The black arrow is pointing to the first row. If I hover over the fourth row and right-click and choose Delete, it's not going to delete the fourth row that I'm hovering over, it's going to delete the first row that's selected.



So be careful to first select the row you want to delete, and then right-click and choose Delete.

More tips not in the video

Tip #1

You can stretch the viewing area by hovering the mouse over the vertical gray line to the left of the viewing area, then clicking and dragging to the right (see green arrow below). In addition, you can resize the columns by hovering the mouse over the vertical gray lines between the column names (see gold circles below), then clicking and dragging left or right. You can also scroll to see the rest of the fields.

